



SP FAIR 12
Design by Manuel Vivian

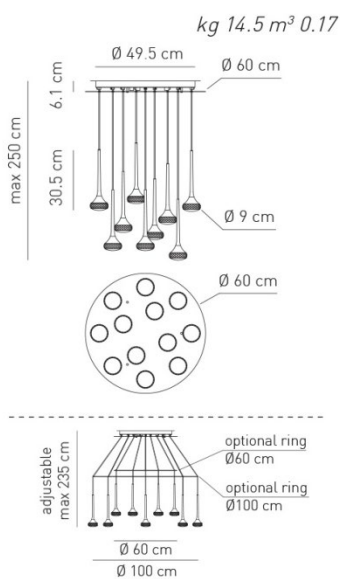
Collection consisting of recessed downlights, wall lamps, ceiling lamps and suspended lamps with chromed metal frame and glass diffuser. Available in several colours and sizes. Built-in (dimmable for some versions) LED light source.

Typology: Suspended

Ratings

- Built in **LED** module
- CCT 2700 K
- Diffused light
- Surface installation over holes
- Supply voltage ~220-240V
- Switch mode: on-off
- Dimmable 1-10V LED driver
- Steel frame

Product code composition



kg 14.5 m³ 0.17

FAIRY / DRIVER INCLUDED

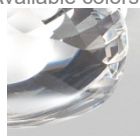
Type	Article	Colours	Finish	Source
SP	FAIR 12	CS crystal	CR white + chrome	LED 12 x 6,4W - diffused beam 2700K
		AM amber	BR white + matt bronze	
		GR grey	NI white + matt nickel	

Gli articoli in rosso sono disponibili solo fino ad esaurimento scorte. Articles in red are available until sold out.

CE	⊕	IP20	CRI90		LED	12 x ~565 lm	88 lm/W	110-240VAC
example composition code		SP	FAIR12	CS	NI	LED		

For optional accessories please refer to our pricelist, website or contact our representatives

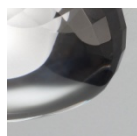
Available colors



CS
Crystal



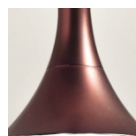
AM
Amber



GR
Grey



CR
Chrome



BR
Matt bronze



NI
Matt nickel

EELc (Energy Efficiency Label compatibility) contain built in LED lamps that cannot be changed: A, A+, A++

CUSTOMER _____ NOTES _____

SPFAIR12 _ _ _ _ LED _____

NOTICE:
Luminous flux (lm) and efficacy (lm/W) for all built in LED luminaires is based on nominal ratings of the LED sources.
Technical data could be subject to alteration without notice. Axo Light does not provide legal guarantee for the accuracy of this data sheet.